

Garden Shed Assembly Instructions

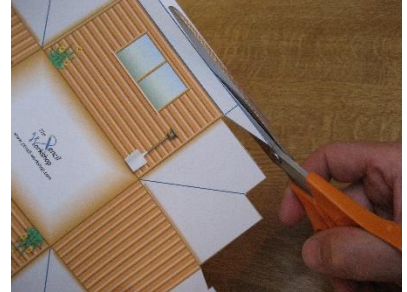
1. Ensure that your printer is capable of printing on card - generally, printers with a rear feed tray can handle thicker material than those which feed from the front.

2. Gather your materials. You will need:

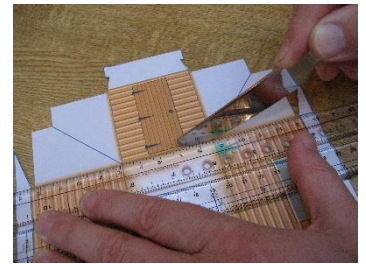
- 2 sheets of A4 light card (card weight in the range 150 - 250gsm should be fine),
- A good pair of scissors,
- A ruler (clear plastic is best) and a blunt knife, for scoring,

3. Print off the two garden shed template sheets (one page makes the roof, the other makes the base).

4. Cut around the edge of the templates, taking care not to cut off any of the grey tabs. Accurate cutting is important, as the tabs are designed to lock together without the need for any glue.

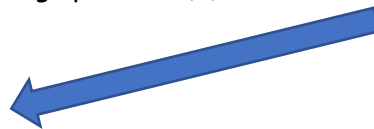
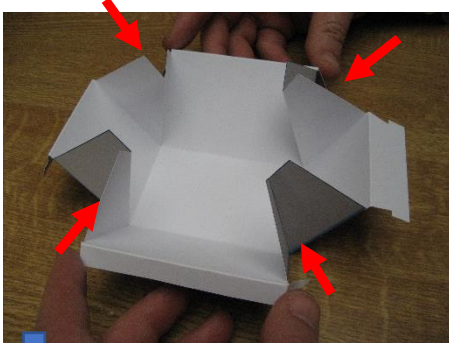
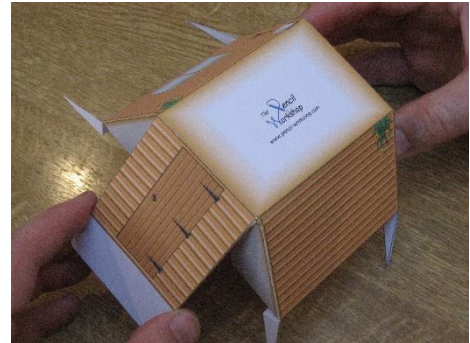


5. Using a blunt knife, guided along the edge of a ruler, score along all of the dark lines on the tabs, and also the joins between the individual panels. The scoring process should create a long indentation in the card to make it easier to fold. Do not use a sharp knife, as this would cut into the card. Do not score card on a surface that matters too much - dents in your dining room table will probably not be appreciated!

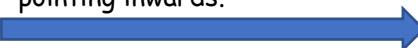
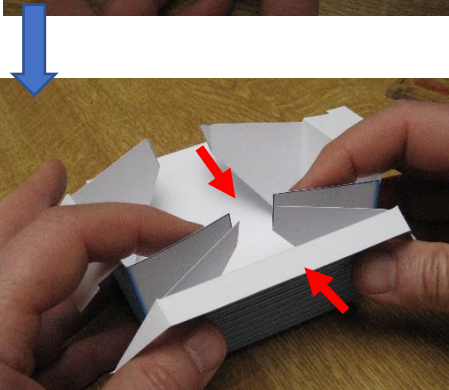


You are now ready to start folding.

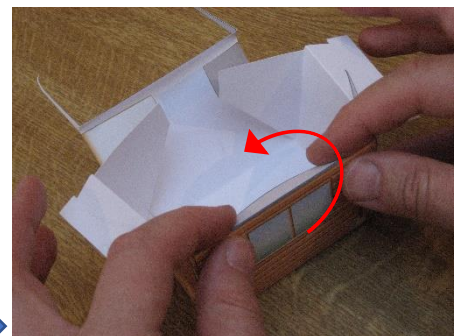
6. Start with the base (the part with the door and window on it), because this is the easiest part to make. Fold the front, back and sides, and the diagonal lines on the corner tabs as shown in the picture on the right; crease each line hard for a crisp fold. If they don't fold easily, repeat the scoring operation (5).



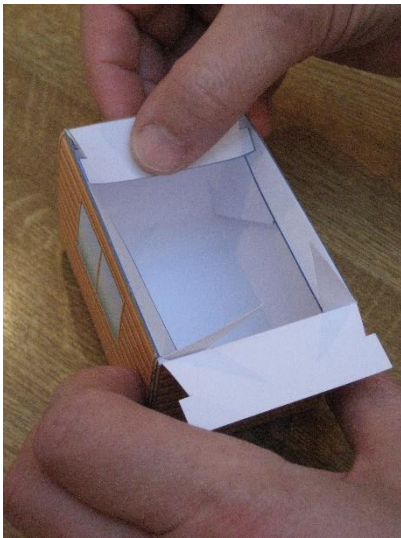
7. Turn the base over and squeeze the sides and ends inwards. The corner tabs should fold inwards. At this stage, it is helpful to bend the other tabs outwards as shown in the picture on the left, to keep them out of the way.



8. Squeeze the two corner tabs against the inside of the long side (left picture), and flip over the long tab to hold them in place (right picture). After this, the two little triangle tabs should end up pointing inwards.



9. Repeat operation 8 on the other long side, so that all of the triangle tabs are pointing inwards, and the only tabs left to fold in are the end tabs at each end of the shed.

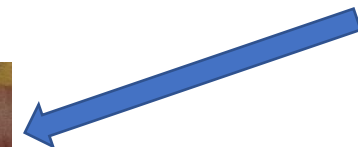
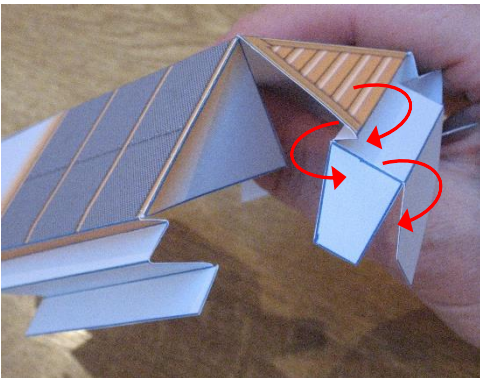
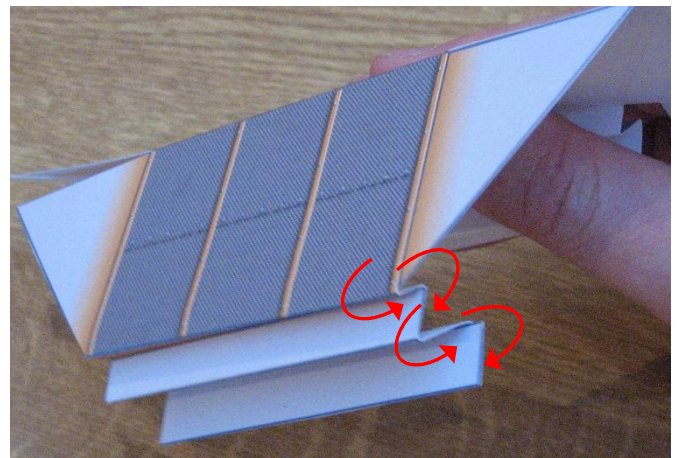


10. Fold the last two tabs inwards, over the triangular tabs. The 'T' shaped ends should lock underneath the long side tabs, so that everything remains in place. The two long side tabs will not quite fold flat against the inside face of the shed; this is intentional and is to provide a bit of friction when the roof and base are brought together. You have now finished the base of the garden shed. Hopefully, it looks like the picture on the right.



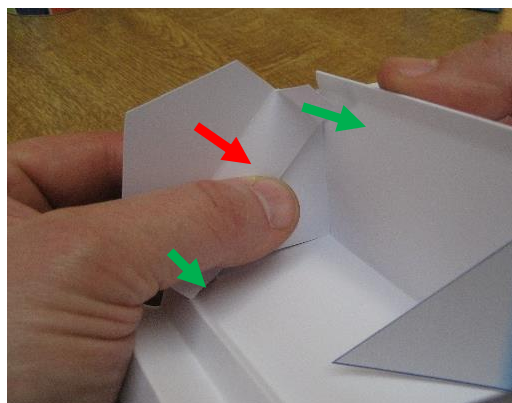
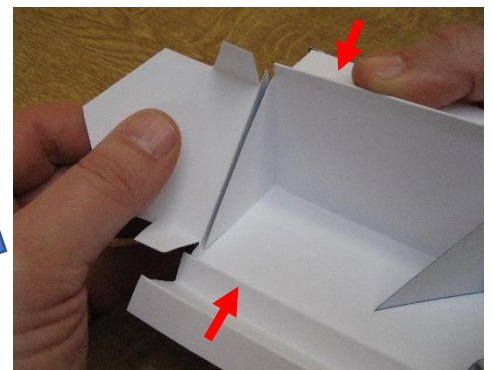
You are now ready to start folding the roof.

11. Take the roof pattern, which you cut out and scored earlier (in operation 4). Fold the ridge line of the roof, and then fold the long side tabs as shown in the picture on the right (first fold in, second fold out, third fold in, fourth fold out). It is important to make these folds tight, as this will keep the roof-line tidy. These folds must be done on both long sides of the roof.



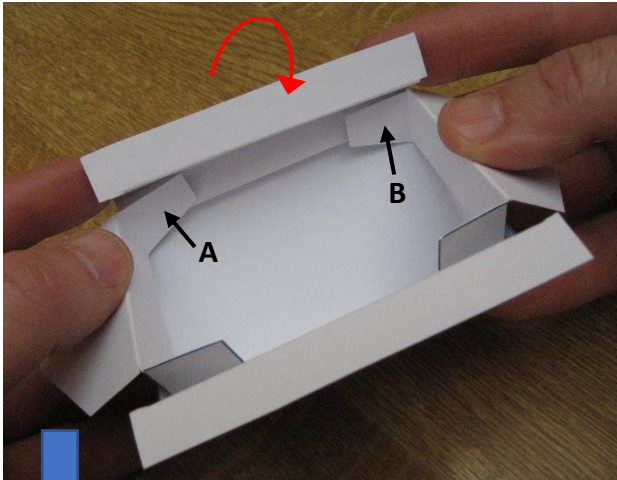
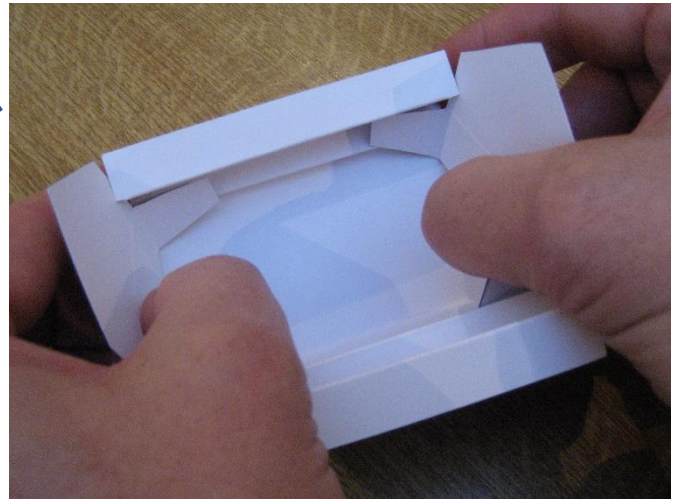
12. Fold the tabs which are attached to the brown triangular roof sections. The first fold is inwards, the second outwards, the third inwards, as shown in the picture on the left. The two little side tabs should be folded in by 90°.

13. Turn the roof section upside down, and squeeze the two sides together, so that the grey triangle is positioned behind the brown one as shown in the picture on the right.

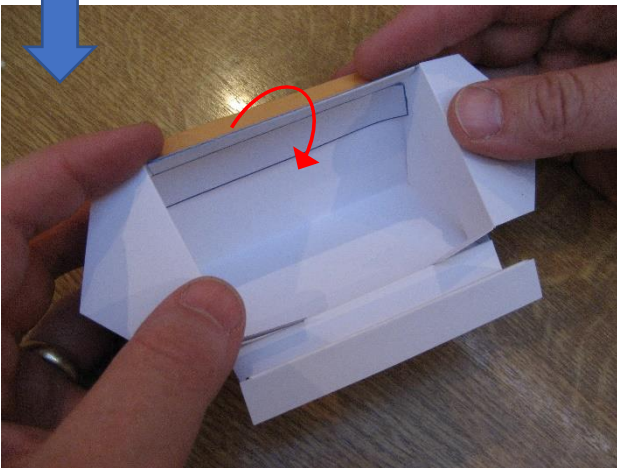


14. Hook the tabs on the end brown triangle sections over the inner triangle, so that the inner triangle is trapped behind the folded tabs (See picture on the left). Do the same with the other end. The two side tabs should be pointing along the line of the side roof sections (see green arrows for correct direction of side tabs).

15. Hold the two end sections of the roof as shown in the picture on the right, with the little side tabs pointing towards each other.

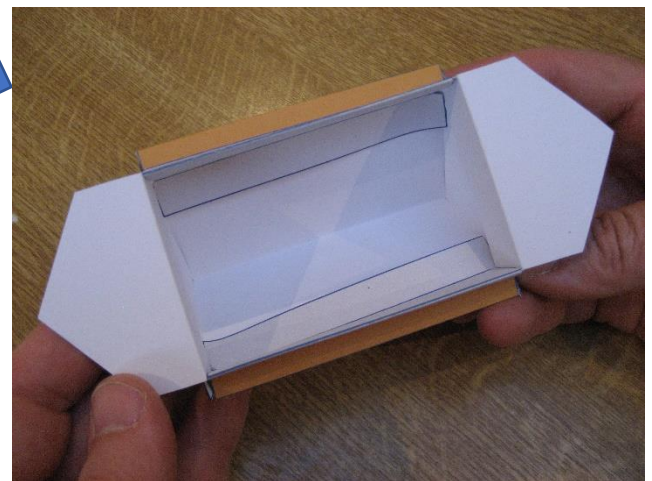


16. Whilst holding the two end sections, bring the long side tabs over the top of the little tabs A and B. (see upper, then lower, pictures on the left). The side tabs should hold flaps A and B in place, and when pushed down into the roof section, the side tab should lock over the end tabs, such that it is trapped and won't fall out.

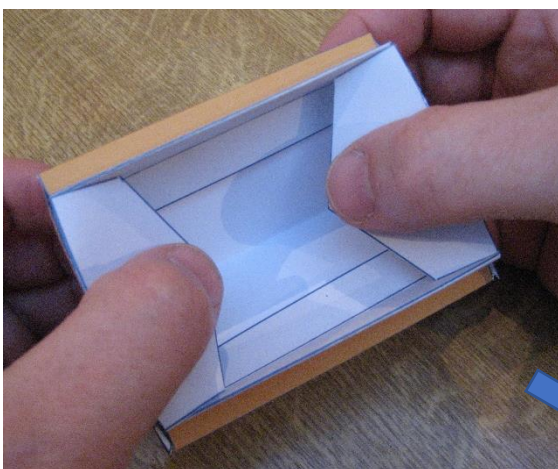


17. Repeat operation 16, with the other long side tabs.

18. With both side tabs folded and locked into position, you should now have something which looks like the picture below.



19. Fold in the two end tabs and push firmly into the roof void (see picture below). They should catch in the ends of the long side tabs.



20. You have now completed your garden shed. The roof should fit snugly inside the base.

